

Enter Sandman

Metallica

Arr: Mark Wood

Violin score for "Enter Sandman" by Metallica, arranged by Mark Wood. The score is in 4/4 time, key of D major, and consists of 48 measures.

Measures 1-6: *mf* (mezzo-forte). Measure 1 has a 2nd finger fingering. Measure 4 has a 4th finger fingering.

Measures 7-13: Continuation of the melody with various articulations and slurs.

Measures 14-19: Continuation of the melody with various articulations and slurs.

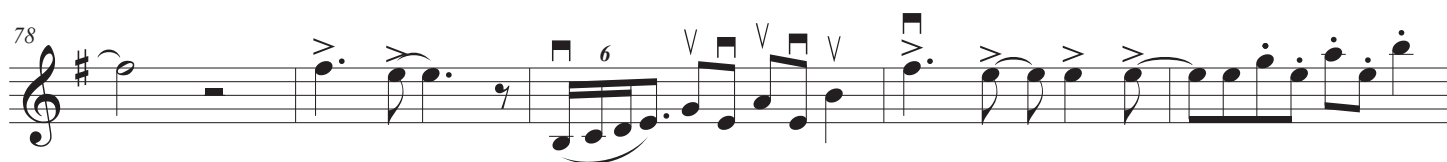
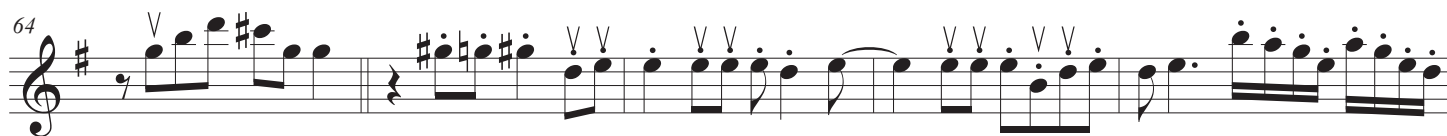
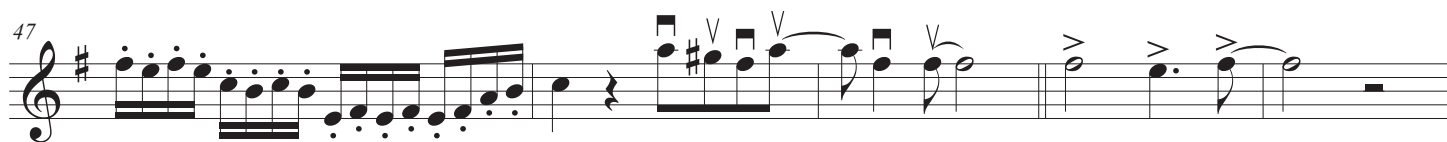
Measures 20-28: Continuation of the melody with various articulations and slurs. Measure 24 has a triplet of eighth notes.

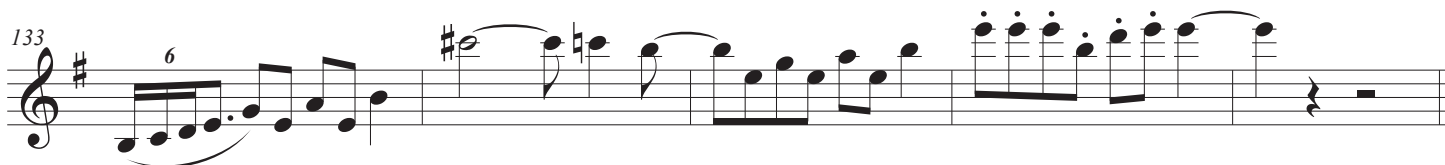
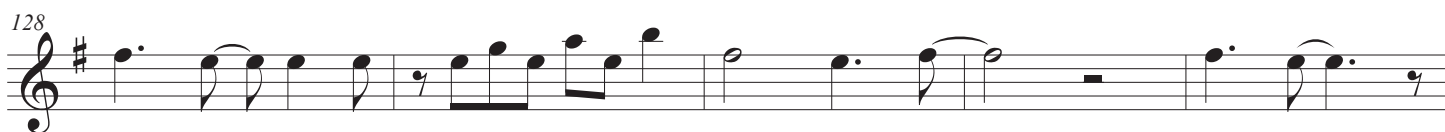
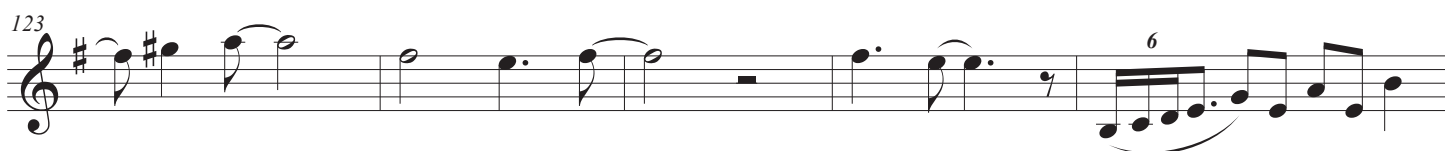
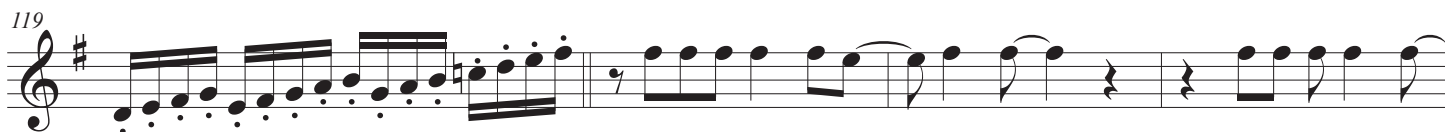
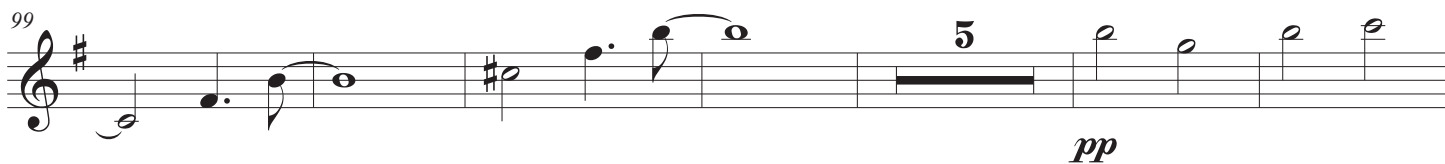
Measures 29-32: Continuation of the melody with various articulations and slurs. Measure 29 has a triplet of eighth notes.

Measures 33-36: Continuation of the melody with various articulations and slurs. Measure 33 has a triplet of eighth notes.

Measures 37-41: Continuation of the melody with various articulations and slurs. Measure 37 has a triplet of eighth notes.

Measures 42-48: Continuation of the melody with various articulations and slurs. Measure 42 has a triplet of eighth notes.







subito p



ff