

Cello

# On The Loose

SAGA  
Mark Wood

*mf*

9 *mp*

13

17

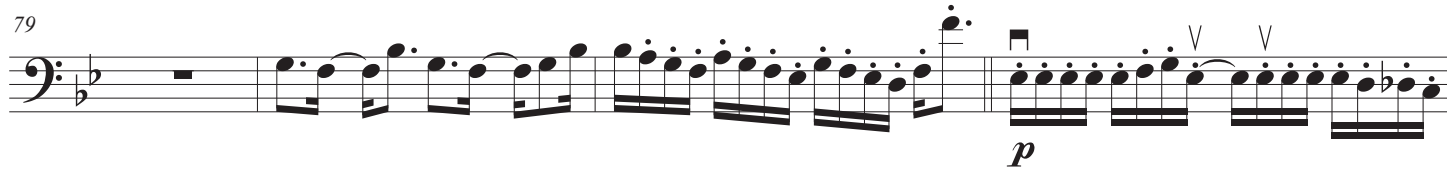
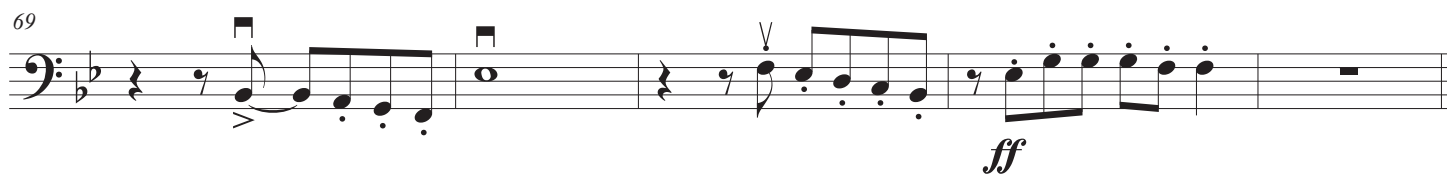
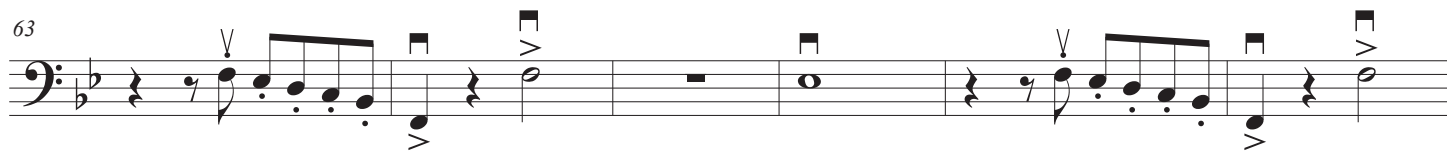
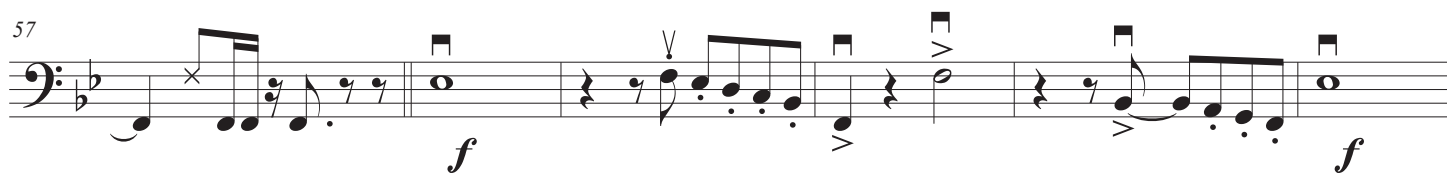
22 *f*

28

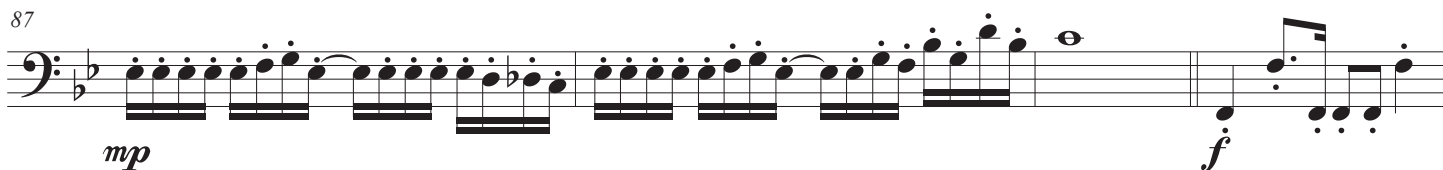
35

41

Detailed description: The musical score is written for a cello in bass clef with a key signature of one flat (B-flat major) and a 4/4 time signature. The piece begins with a whole rest on the first staff, followed by a series of half notes with slurs and a crescendo hairpin. The second staff starts at measure 9 with a mezzo-piano (*mp*) dynamic and features a complex rhythmic pattern of eighth and sixteenth notes, some marked with 'x'. The third staff continues this pattern at measure 13. The fourth staff, starting at measure 17, introduces a more melodic line with eighth notes and rests. The fifth staff, at measure 22, features a forte (*f*) dynamic and includes a triplet of eighth notes. The sixth staff, at measure 28, continues the melodic development with various articulations like accents and slurs. The seventh staff, at measure 35, further develops the melodic line. The final staff, at measure 41, returns to a rhythmic pattern similar to the earlier sections. The score includes various musical notations such as slurs, ties, accents, and dynamic markings.



87



91



94



97



100



104



111



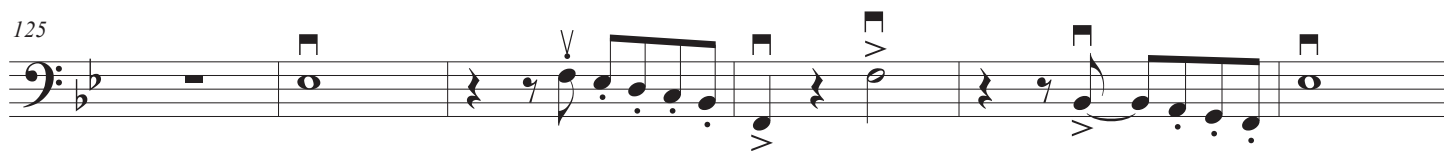
115



119



125



131



136

