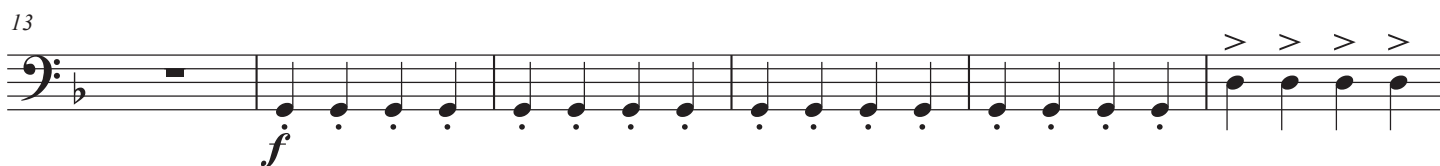
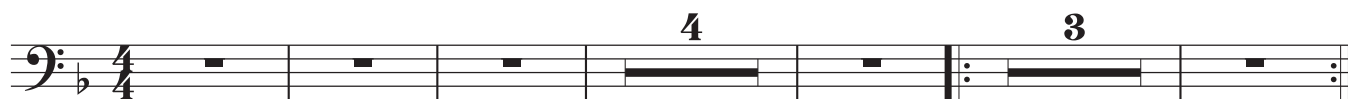


Cello

RENEGADE

Styx

Arr: Mark Wood



62

Staff 62-67: Bass clef, key of B-flat major. Measures 62-64 contain a melodic line with eighth and sixteenth notes. Measure 65 has a double bar line. Measures 66-67 feature a descending eighth-note scale starting on G4, marked with a 'V' above the first note. A hairpin crescendo symbol is positioned below the staff between measures 65 and 66.

68

Staff 68-73: Bass clef, key of B-flat major. Measure 68 is a whole rest. Measure 69 starts with a 'V' above the first note, followed by a descending eighth-note scale. Measure 70 continues the scale. Measure 71 has a double bar line. Measures 72-73 are whole notes, G4 and F4 respectively.

74

Staff 74-79: Bass clef, key of B-flat major. Measures 74-76 are eighth-note chords (F4, Bb3, D4). Measures 77-78 are eighth-note chords (G4, Bb3, D4), each marked with an accent (>) above the first note. Measures 79-80 are eighth-note chords (F4, Bb3, D4), each marked with an accent (>) below the first note.

80

Staff 80-84: Bass clef, key of B-flat major. Measures 80-81 are eighth-note chords (F4, Bb3, D4). Measure 82 has a double bar line. Measures 83-84 are eighth-note chords (F4, Bb3, D4).

85

Staff 85-89: Bass clef, key of B-flat major. Measures 85-86 are eighth-note chords (F4, Bb3, D4). Measure 87 has a double bar line. Measures 88-89 are eighth-note chords (F4, Bb3, D4), each marked with an accent (>) above the first note. A hairpin crescendo symbol is positioned below the staff between measures 87 and 88.