

Violin RT

Sweet Child O' Mine

GNR

Arr: Mark Wood

7

13

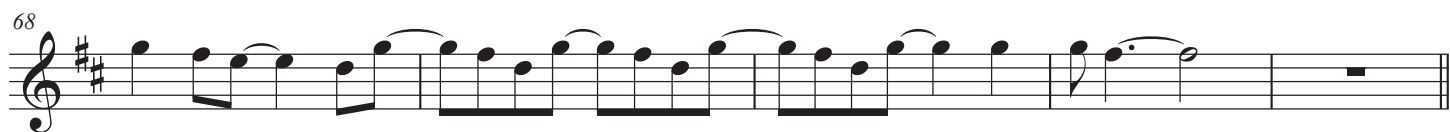
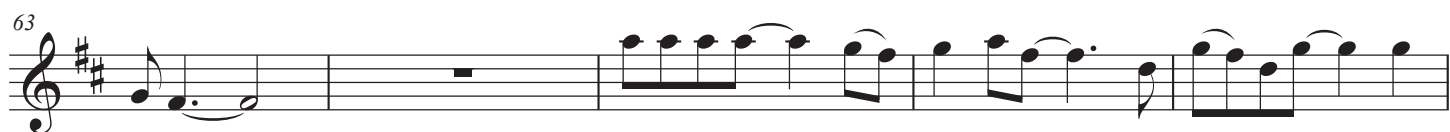
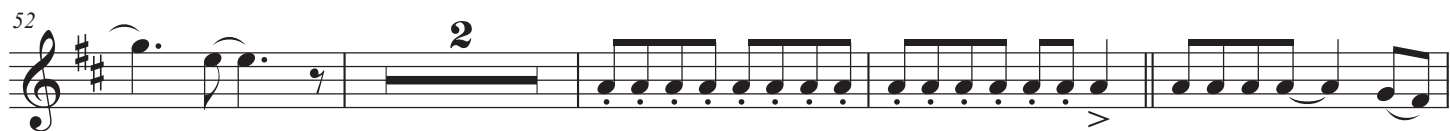
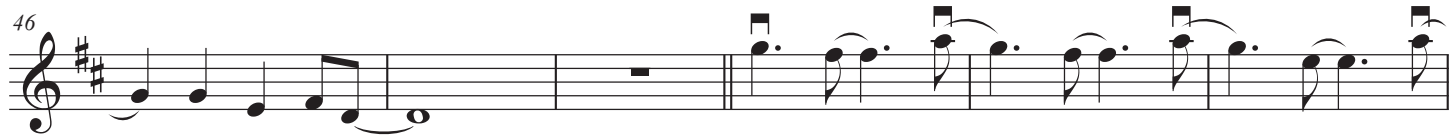
19

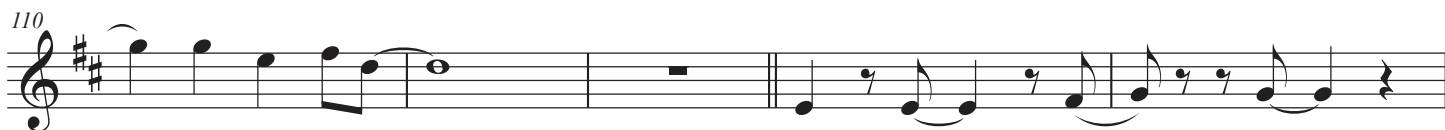
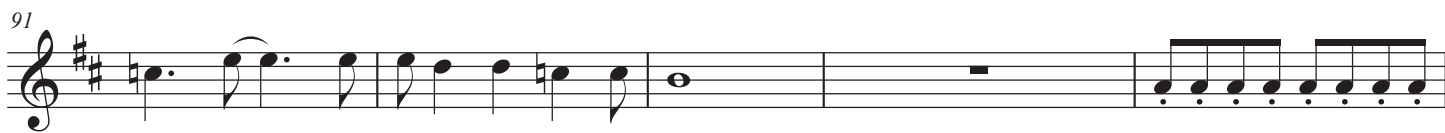
25

30

35

40





139

3

ff

This musical staff covers measures 139 to 145. It begins with a treble clef and a key signature of two sharps (F# and C#). Measure 139 contains an eighth-note triplet (D4, E4, F#4) followed by a quarter note (G4) and a quarter rest. Measure 140 is a whole rest. Measure 141 features a continuous eighth-note triplet (D4, E4, F#4) across the measure. Measure 142 continues with eighth-note triplets (D4, E4, F#4) and (G4, A4, B4). Measure 143 contains eighth-note triplets (D4, E4, F#4) and (G4, A4, B4), followed by a double bar line. Measure 144 starts with a forte (*ff*) dynamic marking and contains eighth-note triplets (D4, E4, F#4) and (G4, A4, B4). Measure 145 concludes with eighth-note triplets (D4, E4, F#4) and (G4, A4, B4), followed by a quarter rest.

146

This musical staff covers measures 146 to 151. It begins with a treble clef and a key signature of two sharps (F# and C#). Measure 146 is a whole rest. Measure 147 contains eighth-note triplets (D4, E4, F#4) and (G4, A4, B4), followed by a quarter rest. Measure 148 is a whole rest. Measure 149 contains eighth-note triplets (D4, E4, F#4) and (G4, A4, B4), followed by a quarter rest. Measure 150 is a whole rest. Measure 151 concludes with eighth-note triplets (D4, E4, F#4) and (G4, A4, B4), followed by a quarter rest.

152

This musical staff covers measures 152 to 156. It begins with a treble clef and a key signature of two sharps (F# and C#). Measure 152 is a whole rest. Measure 153 contains eighth-note triplets (D4, E4, F#4) and (G4, A4, B4), followed by a quarter rest. Measure 154 is a whole rest. Measure 155 contains eighth-note triplets (D4, E4, F#4) and (G4, A4, B4), followed by a quarter rest. Measure 156 features a triplet of eighth notes (D4, E4, F#4) with accents (>) over each note, followed by a triplet of eighth notes (G4, A4, B4) with accents (>) over each note.

157

This musical staff covers measures 157 to 161. It begins with a treble clef and a key signature of two sharps (F# and C#). Measure 157 contains a quarter note (D4), a quarter note (E4), and a quarter rest. Measure 158 contains a quarter note (F#4), a quarter note (G4), and a quarter rest. Measure 159 is a whole rest. Measure 160 contains a half note (D4) with a breath mark (v) below it. Measure 161 contains a half note (E4) with a breath mark (v) below it.